

FIRST FLOOR PLAN

FLOOR PLAN
 N.T.S. ARCH. REF.: A2.01

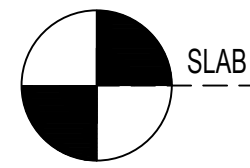
ARCH / G.C. NOTE:
 FLOOR PLANS ARE PROVIDED FOR OPENING TYPE LOCATION ONLY. REFER TO SPECIFIC MARK ELEVATIONS FOR SIZE REFERENCE DIMENSIONING, MULLION SPACING, ETC.

1/23/17	Revise Drawings per Architect's request	IP	NO	DATE
11/28/16	Add Elevation, Fastener Pages, and Details	IP		DATE
11/28/16	REVISION OLDCASTLE/FASTENERS	IP		DATE
11/11/16	2ND. REVISION OLDCASTLE	IP		DATE
9/15/16	1ST. REVISION/TUBELITE			DATE
5/13/16	1ST. SUBMISSION/TUBELITE			DATE
	DESCRIPTION			
	DRAWING SUBMISSION			

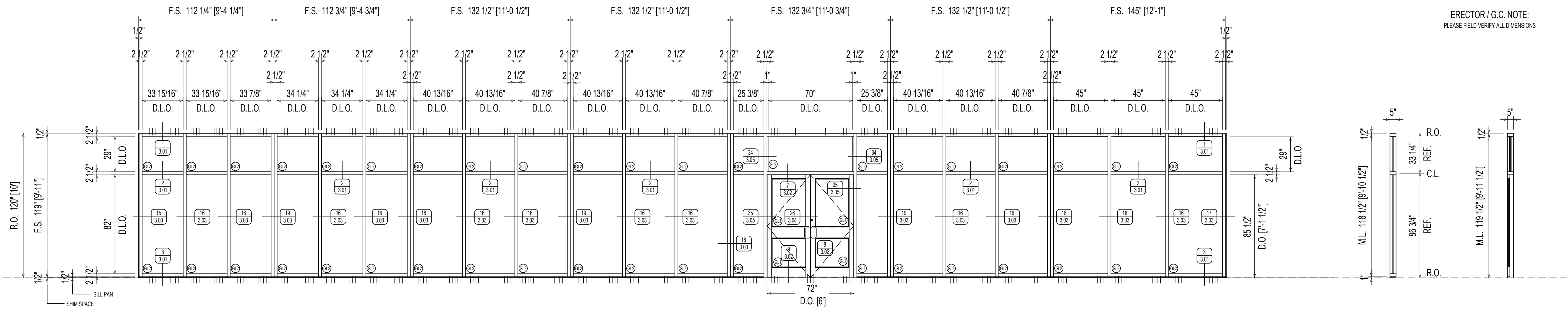
THURMAN FONDREN GLASS	
6933 WEBER RD. CORPUS CHRISTI, TX 78413	
361/854-2316 361/853-8325 FAX	

PROJECT:	FLUOR BLUFF INDEPENDENT SCHOOL DISTRICT NATATORIUM
LOCATION:	CORPUS CHRISTI, TX
ARCHITECT:	THURMAN-FONDREN GLASS CO., INC.
PHONE:	(361) 854-2316

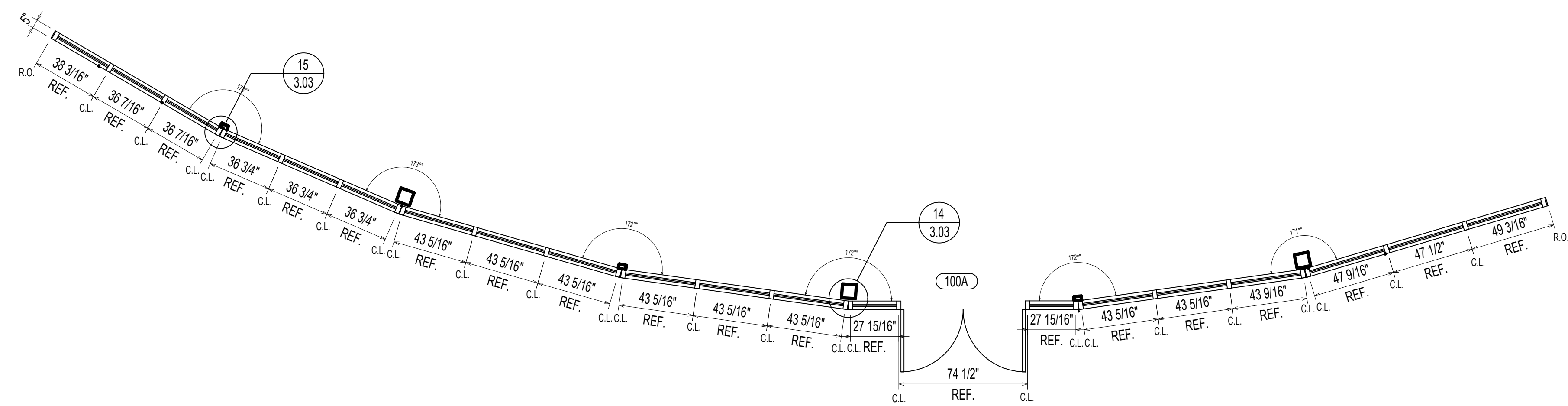
DRAWN BY:	DG	DATE:	05/13/16
CHECKED BY:	CW	DATE:	05/13/16
JOB NAME:	FLUOR BLUFF NATATORIUM		
SHEET NO.:	1.01		



ELEVATION A-100A
 SCALE: 1/2" = 1'-0"
 OLDCASTLE FG 5100T - 2 1/2" X 5"
 EXTERIOR STOREFRONT
 1 5/16" INSULATED GLASS (CENTER SET)
 QUANTITY: 1



ELEVATION "FLATTENED" FOR CLARITY

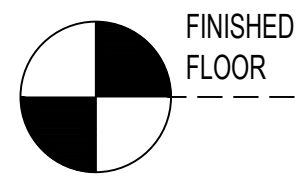


NOTE: SEE SHEET 205 FOR ANCHORING DETAILS.

1/23/17	Revise Drawings per Architect's request	NO
11/28/16	Add Elevation, Fastener Pages, and Details	NO
11/28/16	REVISION/OLDCASTLE/FASTENERS	NO
11/11/16	2ND. REVISION/OLDCASTLE	NO
9/15/16	1ST. REVISION/TUBELITE	NO
5/13/16	1ST. SUBMISSION/TUBELITE	NO
	DESCRIPTION	NO
	DATE	NO
DRAWING SUBMISSION		

THURMAN FONDREN GLASS
 6933 WEBER RD. CORPUS CHRISTI, TX 78413
 361/854-2316 361/853-8325 FAX

PROJECT:	
FLOUR BLUFF INDEPENDENT SCHOOL DISTRICT NATATORIUM	
CORPUS CHRISTI, TX	
SUB CONTRACTOR/INSTALLER	
THURMAN-FONDREN GLASS CO., INC.	
PHONE: (361) 854-2316	
DRAWN BY:	DATE:
DG	05/13/16
CHECKED BY:	DATE:
CW	05/13/16
JOB NAME:	
FLUOR BLUFF NATATORIUM	
SHEET NO:	
2.01	



FINISHED FLOOR

ELEVATION

SCALE: 1/2" = 1'-0"

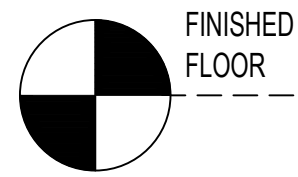
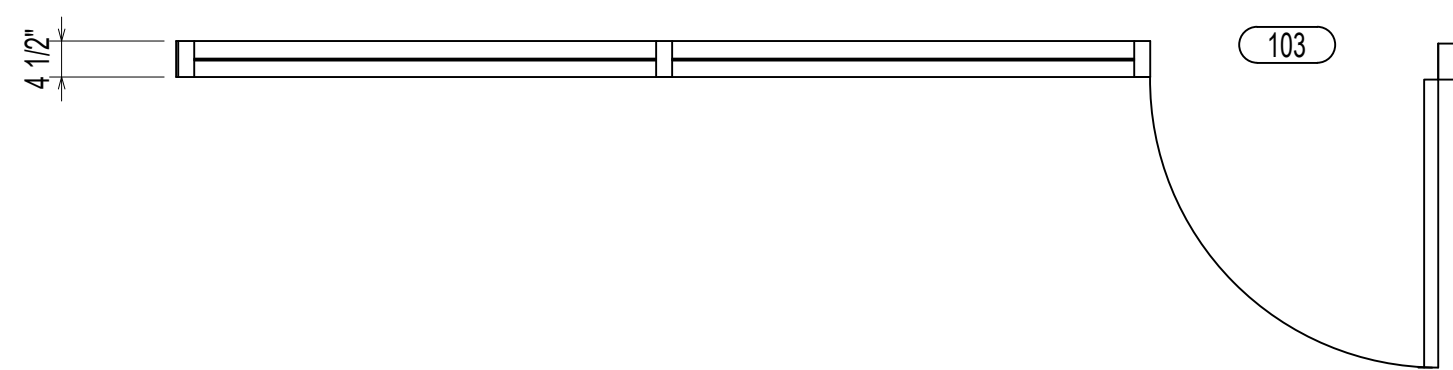
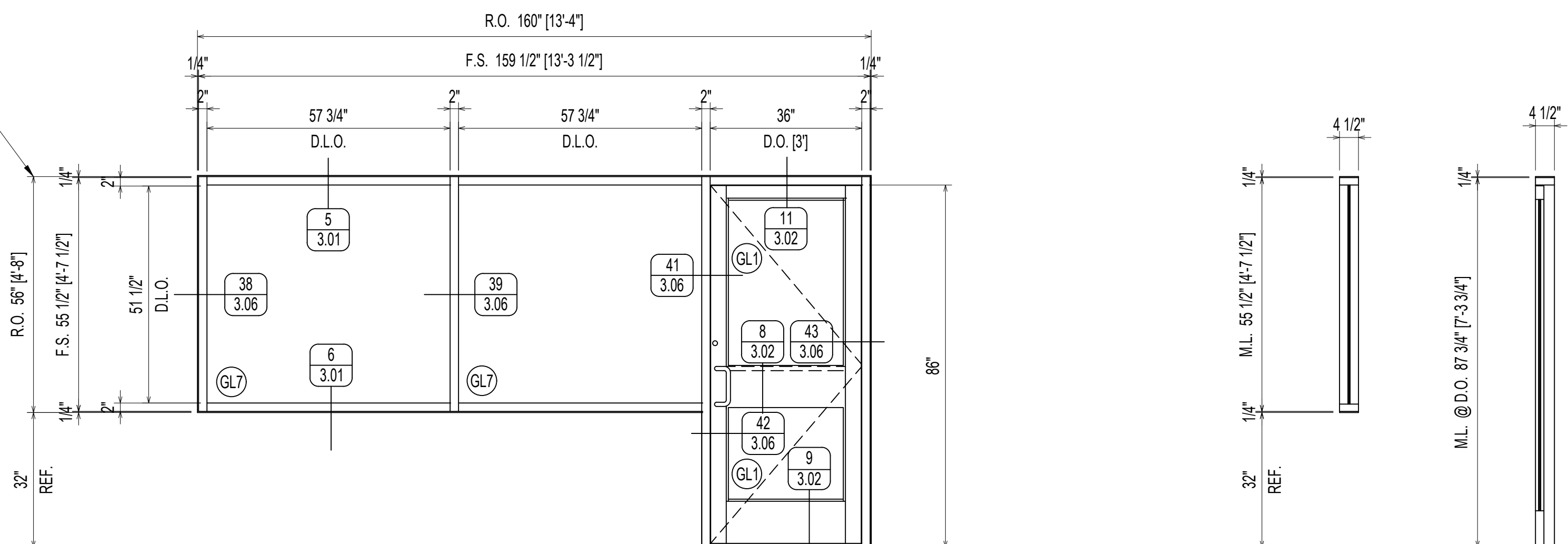
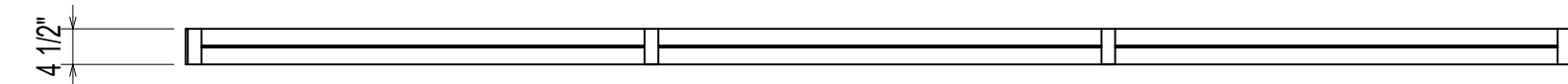
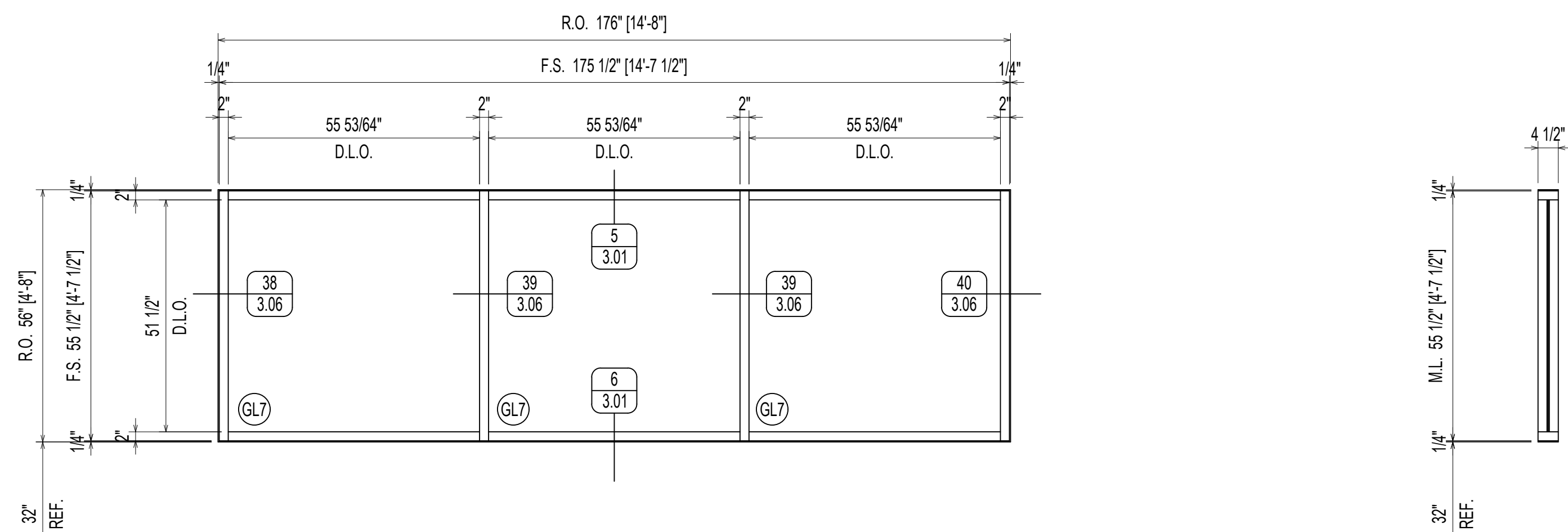
OLDCASTLE FG 3000 - 2" X 4 1/2"

INTERIOR STOREFRONT

1" INSULATED TEMPERED GLASS (CENTER SET) IN WINDOWS

QUANTITY: 1

C-107



FINISHED FLOOR

ELEVATION

SCALE: 1/2" = 1'-0"

OLDCASTLE FG 3000 - 2" X 4 1/2"

INTERIOR STOREFRONT

1" INSULATED TEMPERED GLASS (CENTER SET) IN WINDOWS

3/8" INSULATED TEMPERED GLASS IN DOORS

QUANTITY: 1

C-103

1/23/17	Revise Drawings per Architect's request
11/28/16	Add Elevation, Fastener Pages, and Details
11/28/16	REVISION OLDCASTLE/FASTENERS
11/11/16	2ND. REVISION OLDCASTLE
9/15/16	1ST. REVISION/TUBELITE
5/13/16	1ST. SUBMISSION/TUBELITE
	DESCRIPTION
NO	DATE

THURMAN FONDREN GLASS

6933 WEBER RD. CORPUS CHRISTI, TX 78413

361/854-2316 361/853-8325 FAX

FLUOR BLUFF INDEPENDENT SCHOOL DISTRICT NATATORIUM

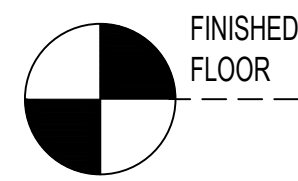
CORPUS CHRISTI, TX

THURMAN-FONDREN GLASS CO., INC.

PHONE: (361) 854-2316

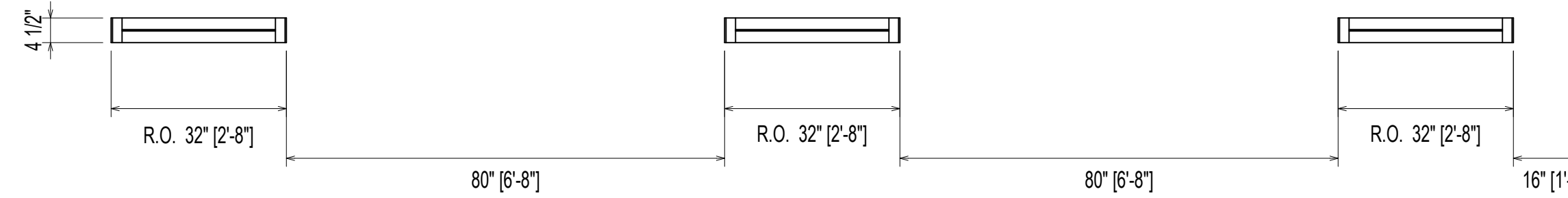
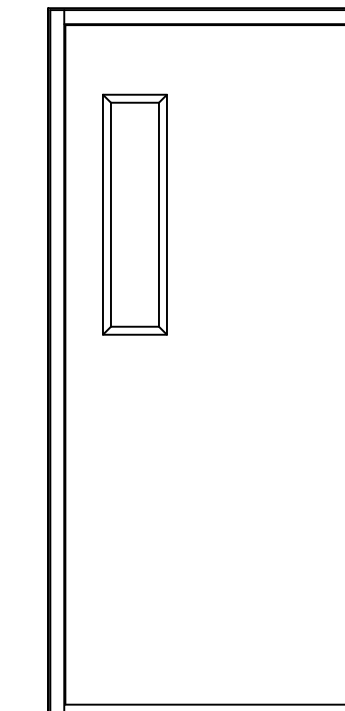
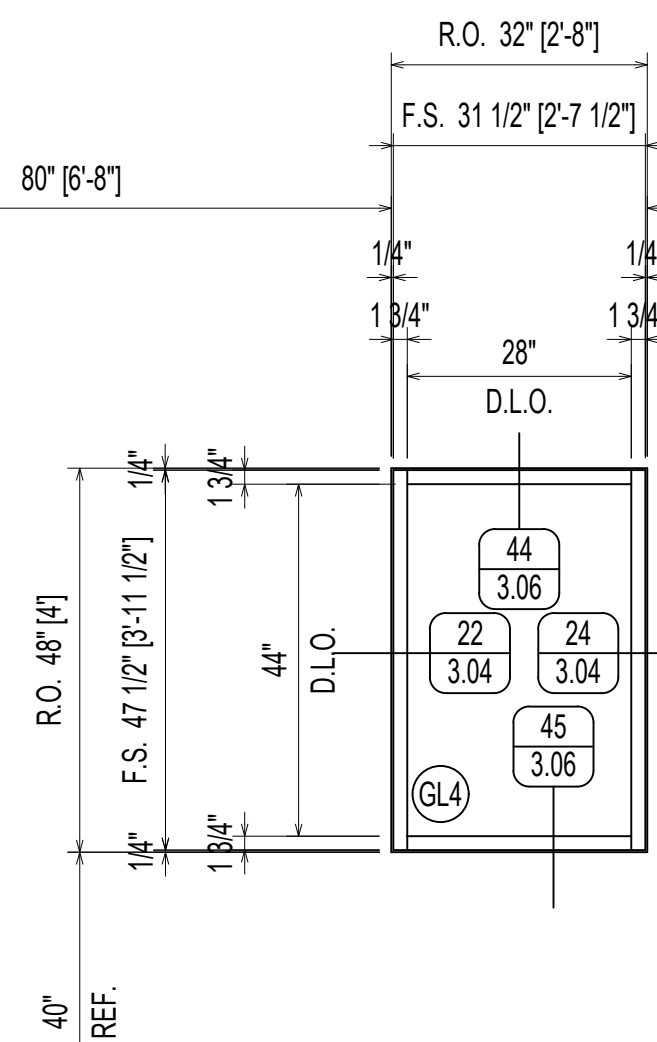
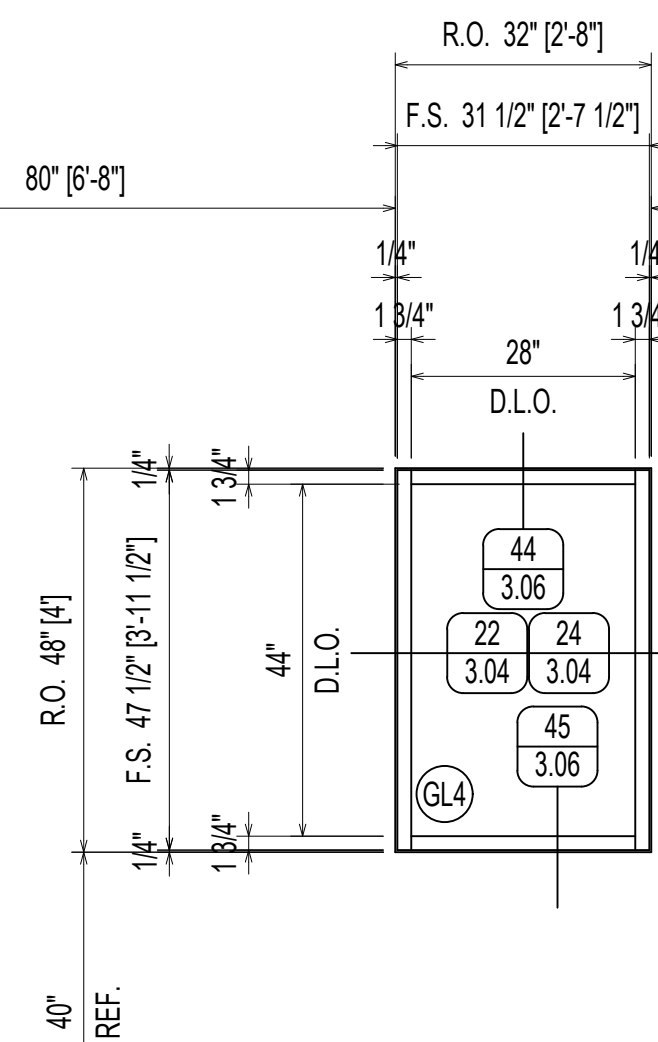
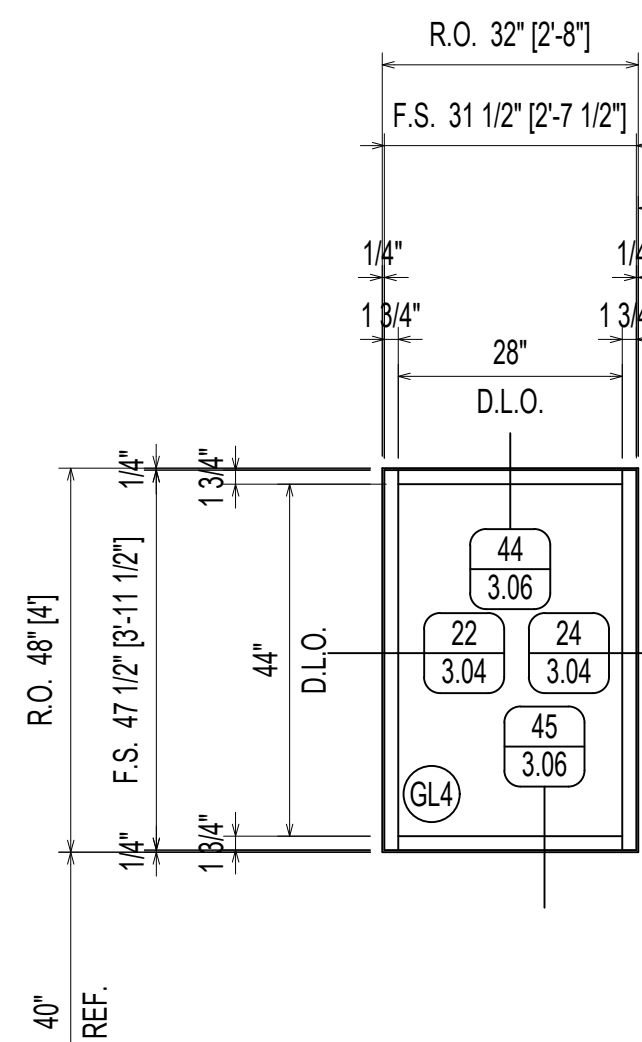
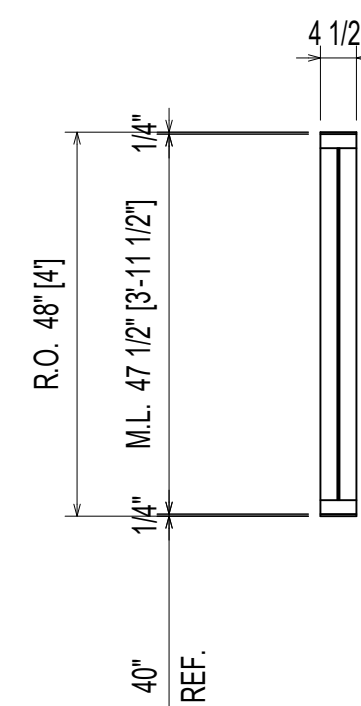
PROJECT:	FLUOR BLUFF NATATORIUM
DRAWN BY:	DG
CHECKED BY:	CW
DATE:	05/13/16
JOB NAME:	FLUOR BLUFF NATATORIUM
SHEET NO.:	2.03

DRAWING SUBMISSION



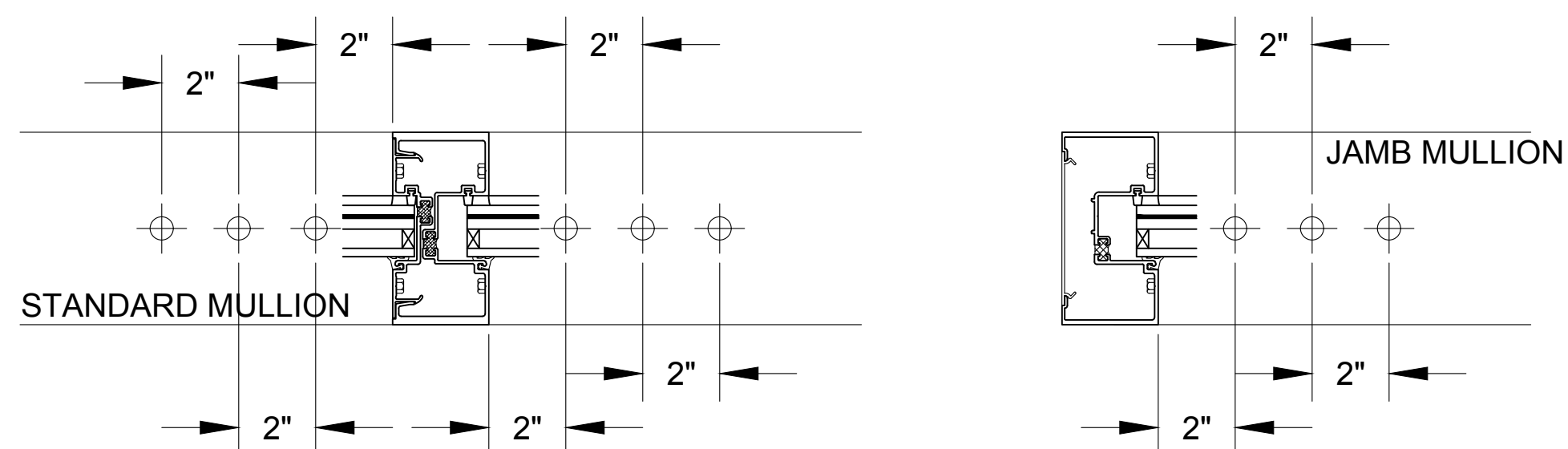
ELEVATION A-117

SCALE: 1/2" = 1'-0"
 OLDCASTLE FG-2000 - 1 3/4" X 4 1/2"
 INTERIOR STOREFRONT
 1/4" TEMPERED GLASS (CENTER SET)
 QUANTITY: 1



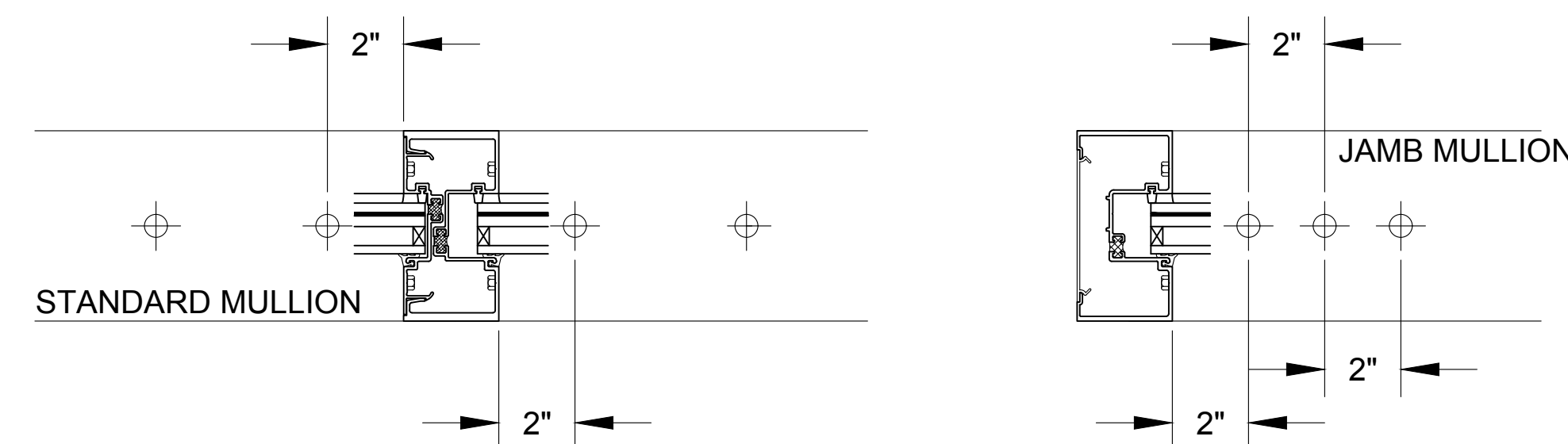
FASTENER DETAILS

SCALE: N T S
 OLDCASTLE FG 5100T - 2 1/2" X 5"
 TYPICAL ANCHORING



TYPICAL ANCHOR DETAIL FOR WOOD CONNECTION

NOTE: 3/8" DIA. LAG SCREWS TO DOUBLE 2X WOOD BUCK (G = 0.55) W/ 3" Min. PENETRATION INTO WOOD.



TYPICAL ANCHOR DETAIL FOR A CONCRETE OR STEEL CONNECTION

CONCRETE: 3/8" DIA. HILTI HUSH-H SCREW ANCHORS W/ 2" Min. EMBEDMENT INTO POURED CONCRETE (Min. fc = 3 ksi).

STEEL: 3/8" DIA. TYPE "F" BOLT W/ 4 1/2" Min. E.D. BEYOND ANY FINISH MATERIAL & 3/8" MAX. SHIM SPACE.

1/23/17	Revise Drawings per Architect's request	ip
11/28/16	Add Elevation, Fastener Pages, and Details	ip
11/28/16	REVISION OLDCASTLE FASTENERS	ip
11/11/16	2ND. REVISION OLDCASTLE	ip
9/15/16	1ST. REVISION TUBELITE	
5/13/16	1ST. SUBMISSION TUBELITE	
	DESCRIPTION	NO
	DATE	
	DRAWING SUBMISSION	

THURMAN FONDREN GLASS

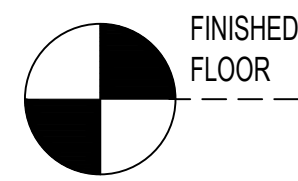
6933 WEBER RD. CORPUS CHRISTI, TX 78413
 361/854-2316 361/853-8325 FAX

PROJECT: FLOUR BLUFF INDEPENDENT SCHOOL DISTRICT NATATORIUM

CORPUS CHRISTI, TX

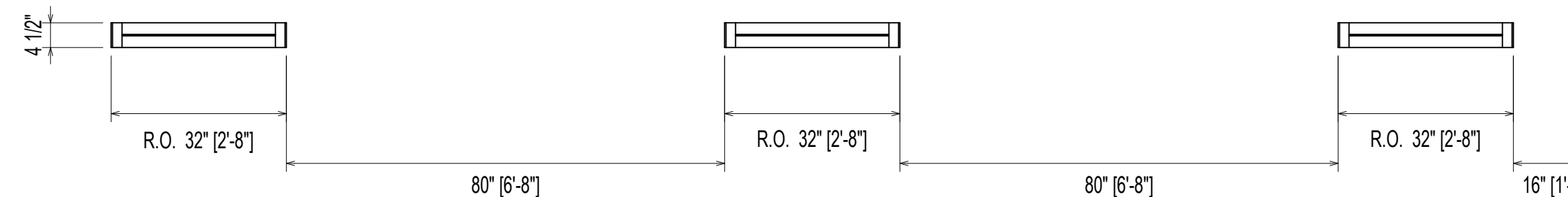
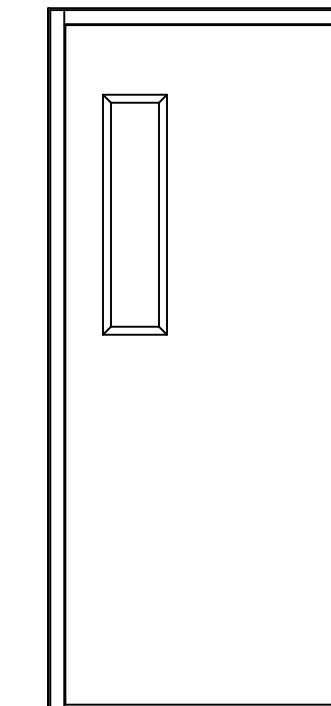
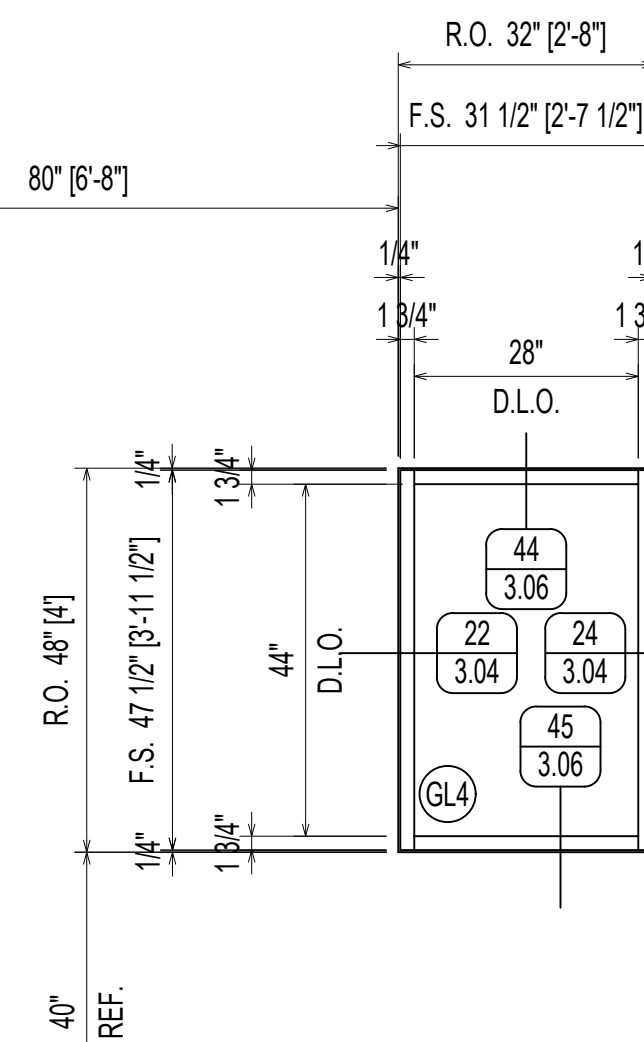
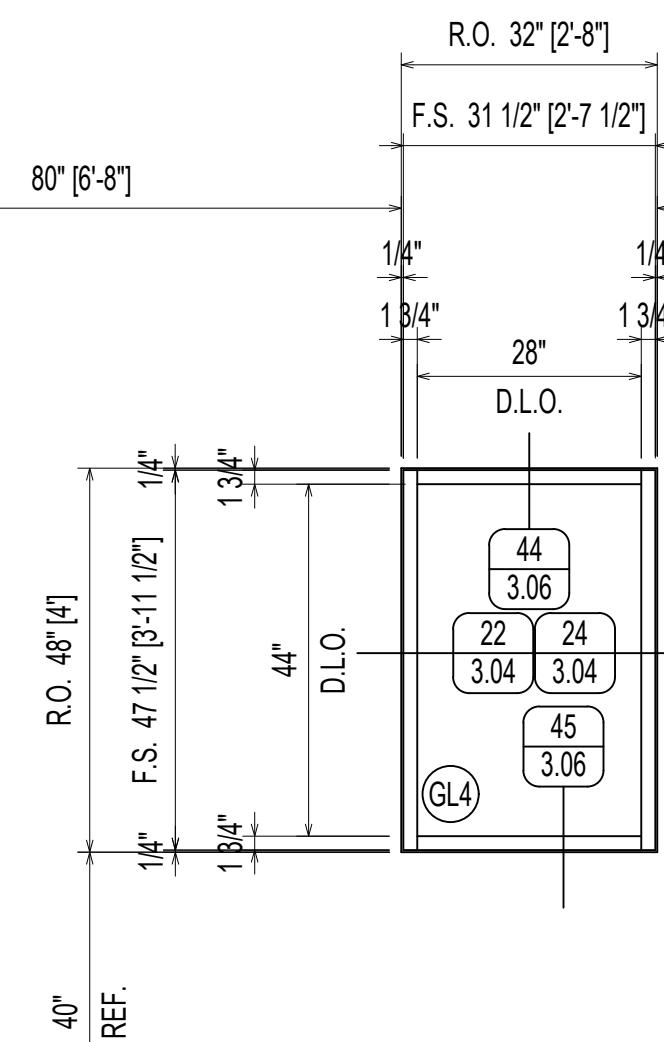
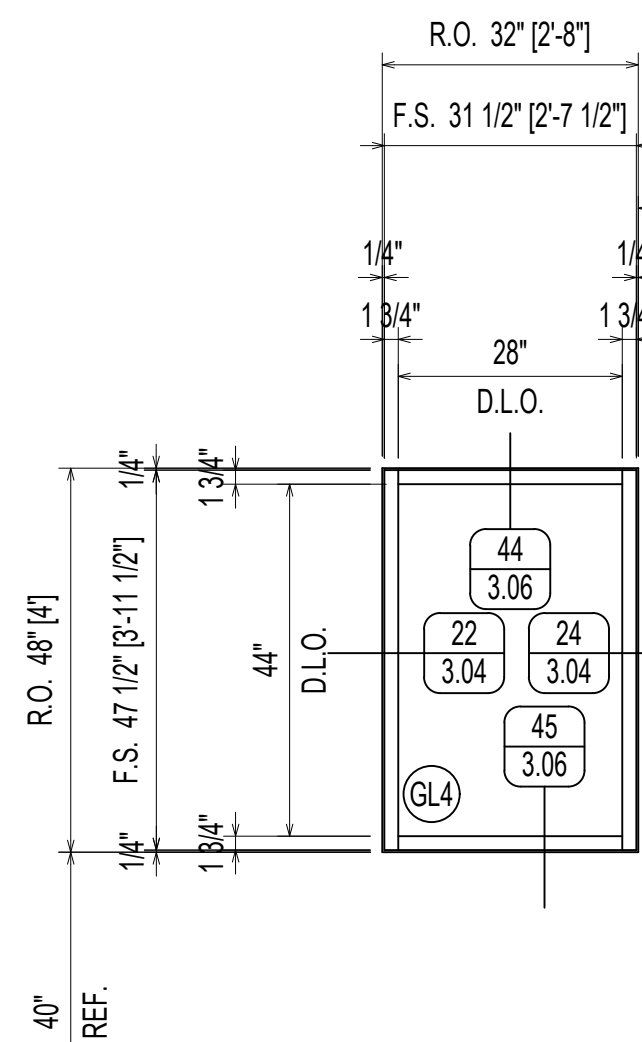
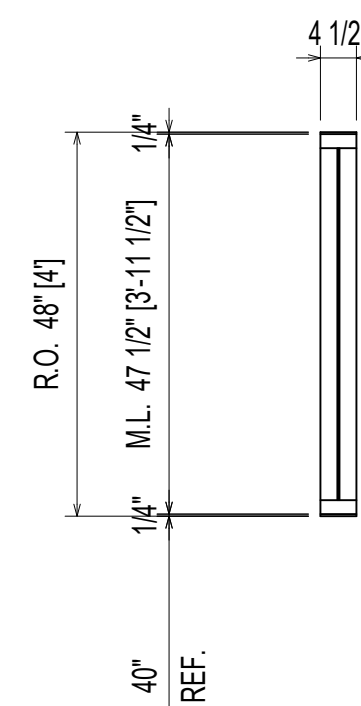
THURMAN-FONDREN GLASS CO., INC.
 PHONE: (361) 854-2316

DRAWN BY: DG	DATE: 05/13/16
CHECKED BY: CW	DATE: 05/13/16
JOB NAME: FLUOR BLUFF NATATORIUM	
SHEET NO.: 2.05	



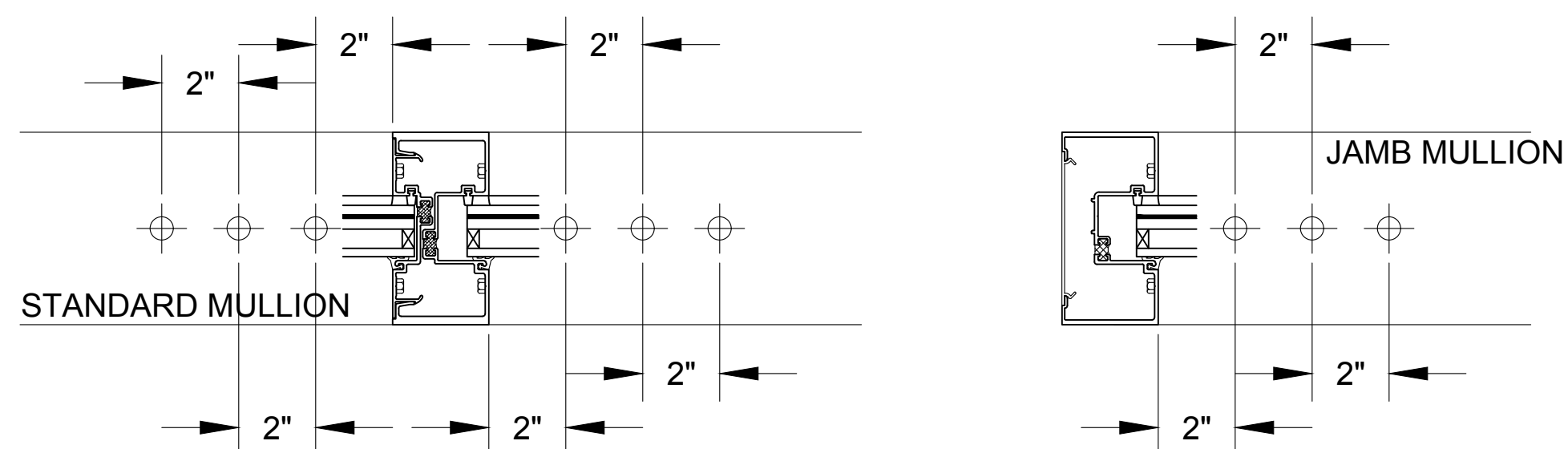
ELEVATION A-117

SCALE: 1/2" = 1'-0"
 OLDCASTLE FG-2000 - 1 3/4" X 4 1/2"
 INTERIOR STOREFRONT
 1/4" TEMPERED GLASS (CENTER SET)
 QUANTITY: 1



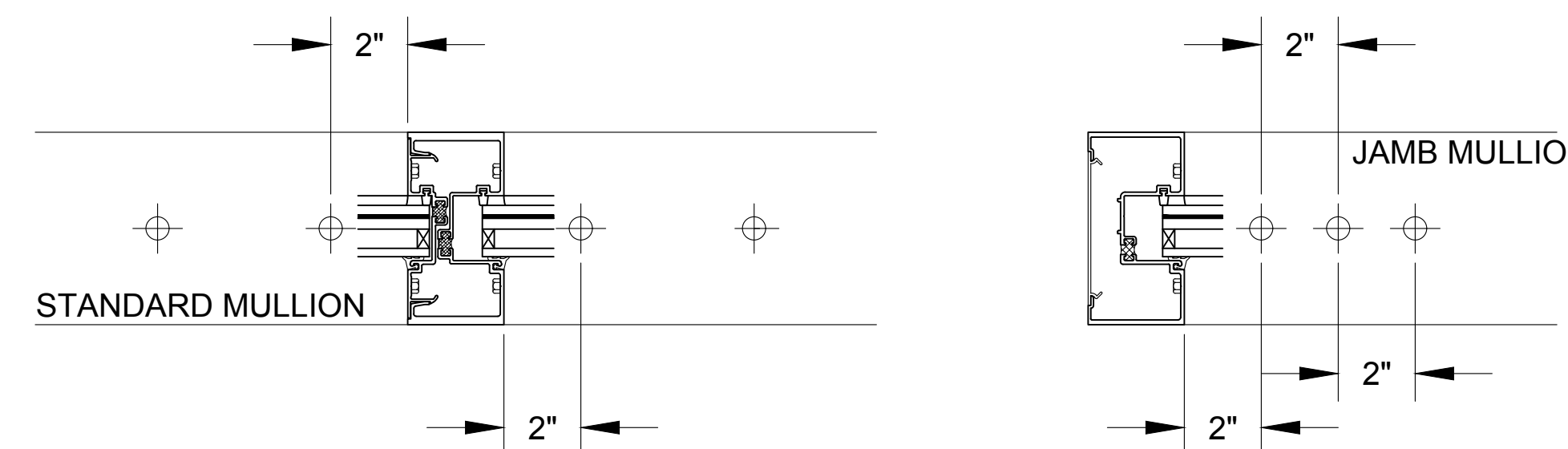
FASTENER DETAILS

SCALE: N T S
 OLDCASTLE FG 5100T - 2 1/2" X 5"
 TYPICAL ANCHORING



TYPICAL ANCHOR DETAIL FOR WOOD CONNECTION

NOTE: 3/8" DIA. LAG SCREWS TO DOUBLE 2X WOOD BUCK (G = 0.55) W/ 3" Min. PENETRATION INTO WOOD.



TYPICAL ANCHOR DETAIL FOR A CONCRETE OR STEEL CONNECTION

CONCRETE: 3/8" DIA. HILTI HUSH-H SCREW ANCHORS W/ 2" Min. EMBEDMENT INTO POURED CONCRETE (Min. fc = 3 ksi).

STEEL: 3/8" DIA. TYPE "F" BOLT W/ 4 1/2" Min. E.D. BEYOND ANY FINISH MATERIAL & 3/8" MAX. SHIM SPACE.

1/23/17	Revise Drawings per Architect's request	ip
11/28/16	Add Elevation, Fastener Pages, and Details	ip
11/28/16	REVISION OLDCASTLE FASTENERS	ip
11/11/16	2ND. REVISION OLDCASTLE	ip
9/15/16	1ST. REVISION TUBELITE	
5/13/16	1ST. SUBMISSION TUBELITE	NO
	DESCRIPTION	
	DRAWING SUBMISSION	

THURMAN FONDREN GLASS

6933 WEBER RD. CORPUS CHRISTI, TX 78413

361/854-2316 361/853-8325 FAX

PROJECT: FLOUR BLUFF INDEPENDENT SCHOOL DISTRICT NATATORIUM

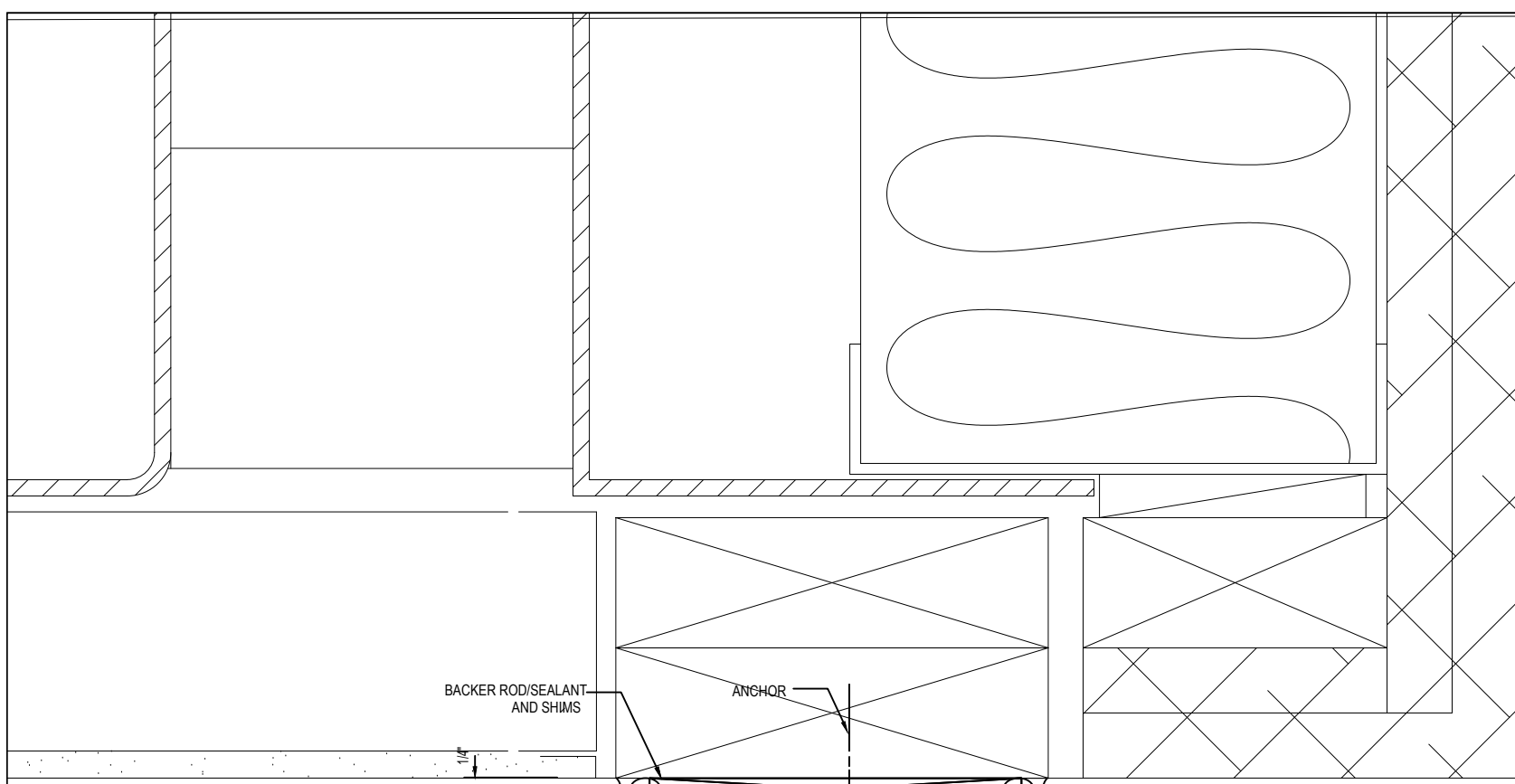
CORPUS CHRISTI, TX

THURMAN-FONDREN GLASS CO., INC.
 PHONE: (361) 854-2316

DRAWN BY: DG	DATE: 05/13/16
CHECKED BY: CW	DATE: 05/13/16

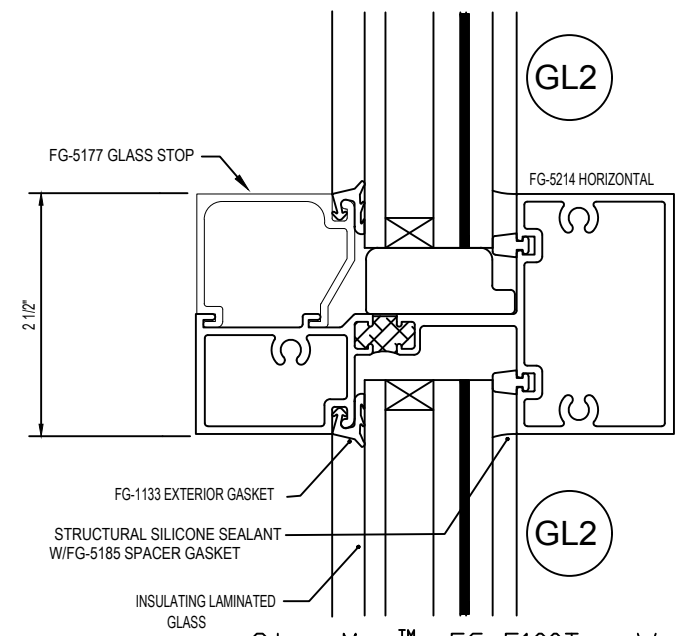
JOB NAME: FLUOR BLUFF NATATORIUM

SHEET NO.: 2.05



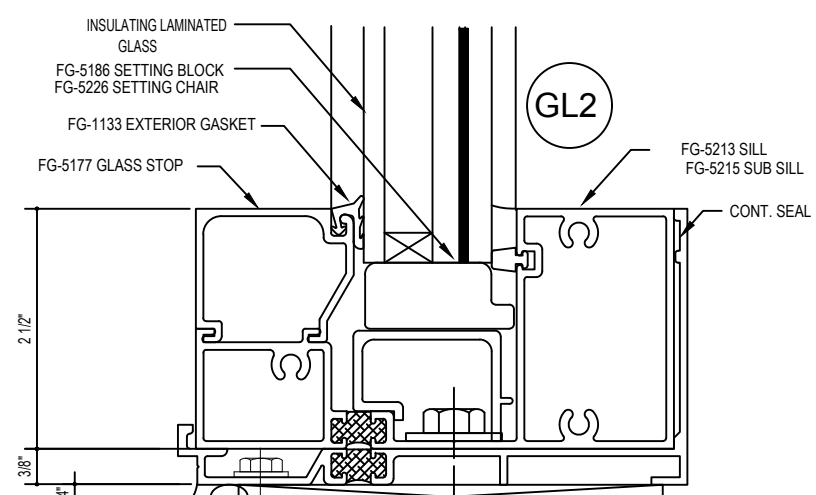
StormMax™ FG-5100T - Wet Glazed Head - H8341

1
3.01
ARCH 1/A4.31
A-100A



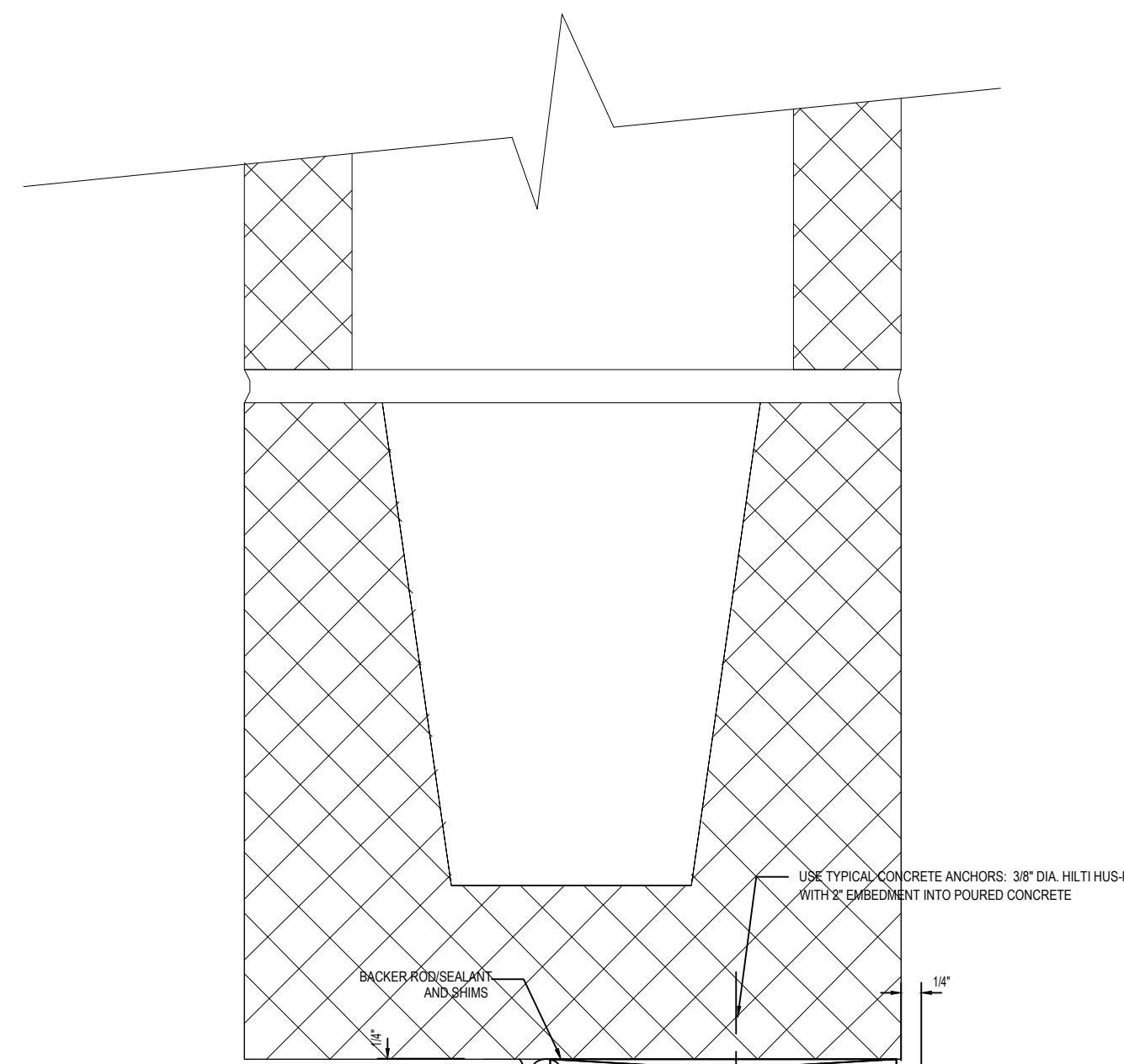
StormMax™ FG-5100T - Wet Glazed Horizontal - H8342

2
3.01
A-100A, A-123A, A-123H, A-123I, A-123P



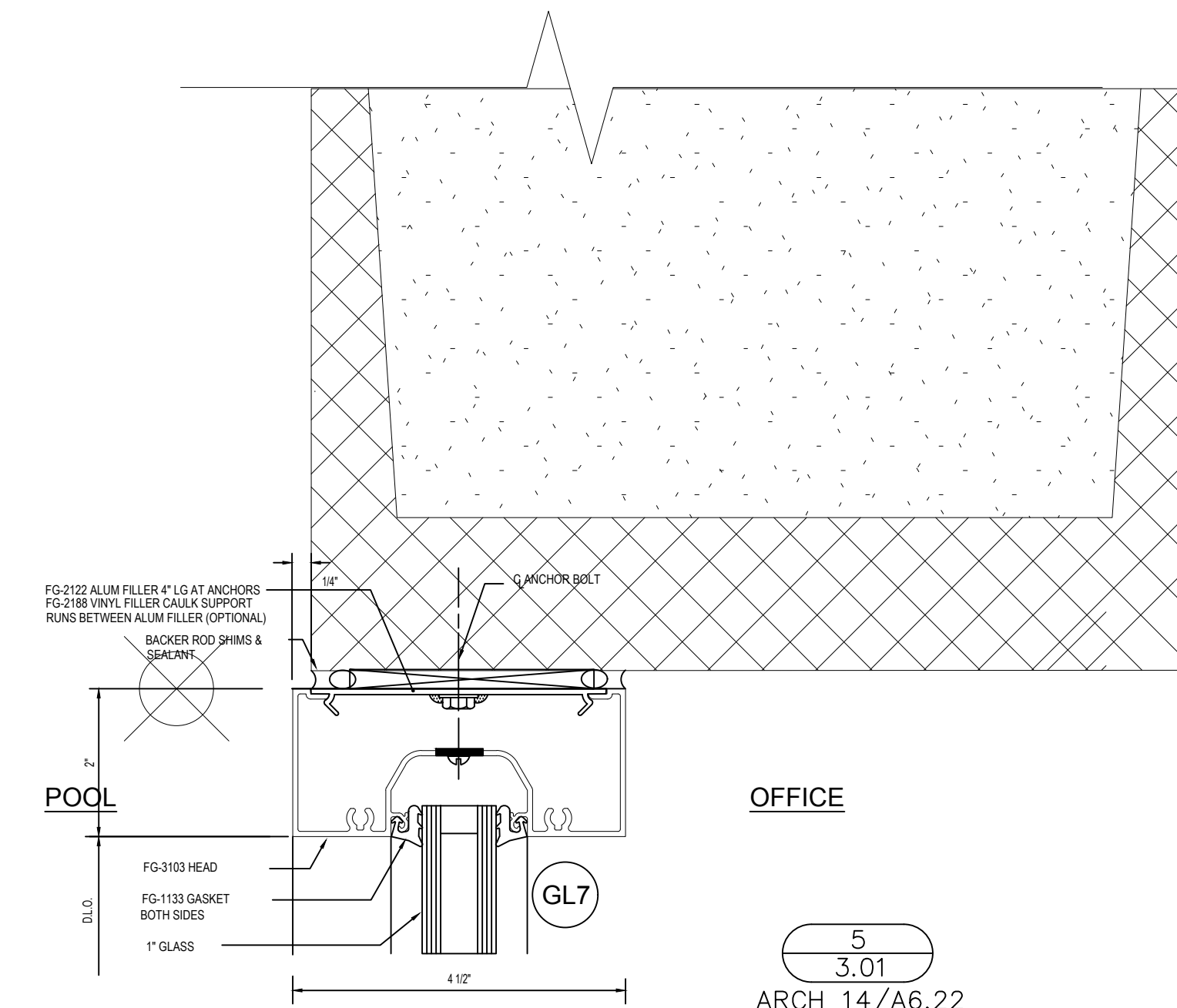
StormMax™ FG-5100T - Wet Glazed Sill - H8343

3
3.01
A-100A, A-123A, A-123H, A-123I, A-123P

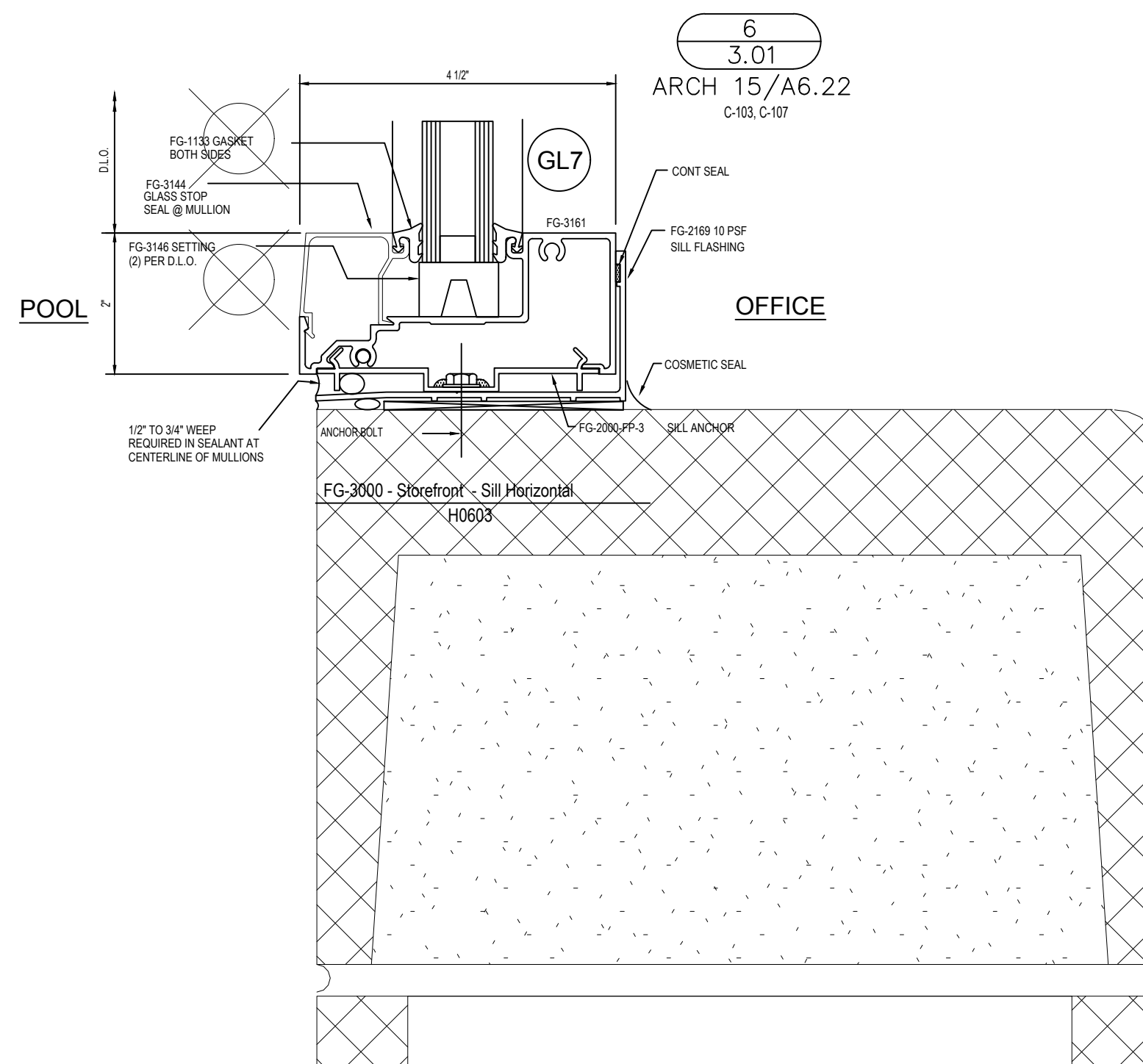


StormMax™ FG-5100T - Wet Glazed Head - H8341

4
3.01
ARCH 4/A4.21
A-123A, A-123H, A-123I, A-123P



5
3.01
ARCH 14/A6.22
C-103, C-107



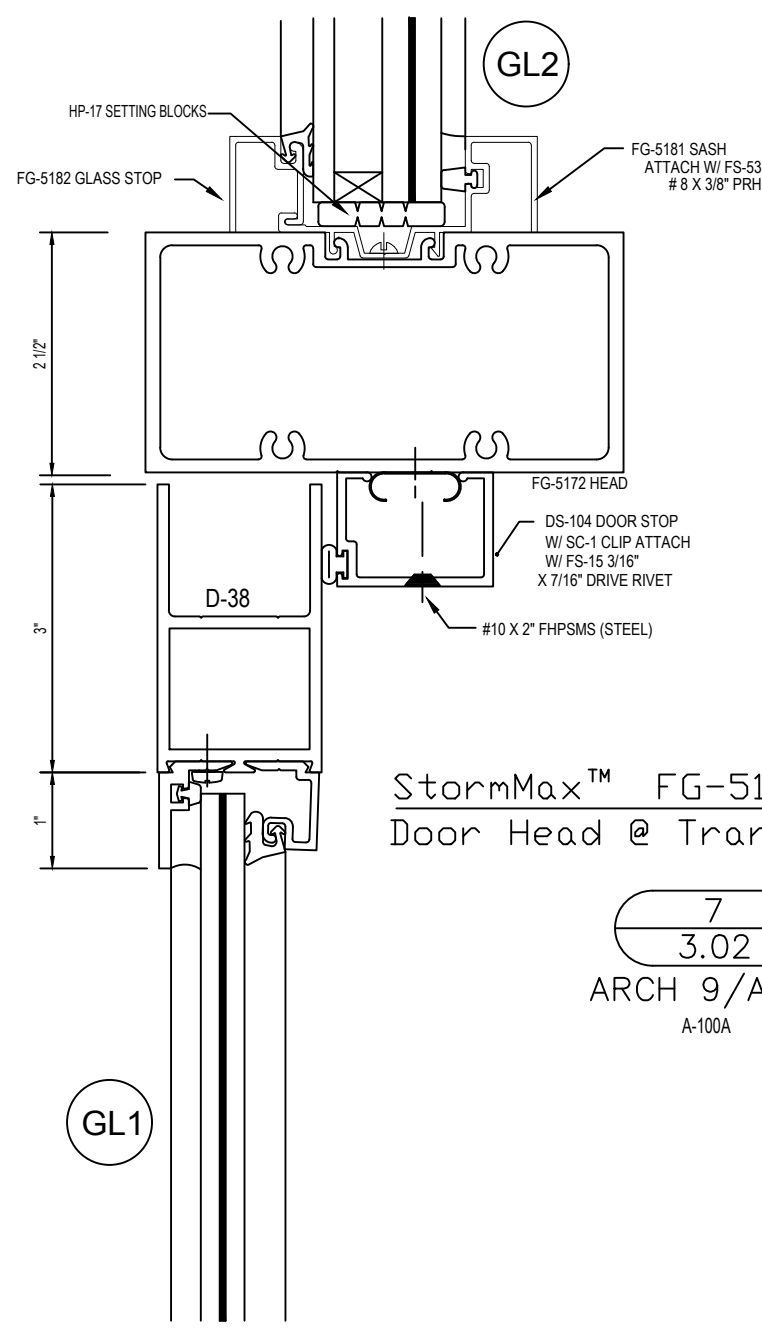
6
3.01
ARCH 15/A6.22
C-103, C-107

1/23/17	Revise Drawings per Architect's request	ip
11/28/16	Add Elevation, Fastener Pages, and Details	ip
11/28/16	REVISION 1/0LDCASTLE/FASTENERS	ip
11/11/16	2ND. REVISION 1/0LDCASTLE	ip
9/15/16	1ST. REVISION/TUBELITE	
5/13/16	1ST. SUBMISSION/TUBELITE	
	DESCRIPTION	NO
	DATE	
DRAWING SUBMISSION		

THURMAN FONDREN GLASS
6933 WEBER RD. CORPUS CHRISTI, TX 78413
361/854-2316 361/853-8325 FAX

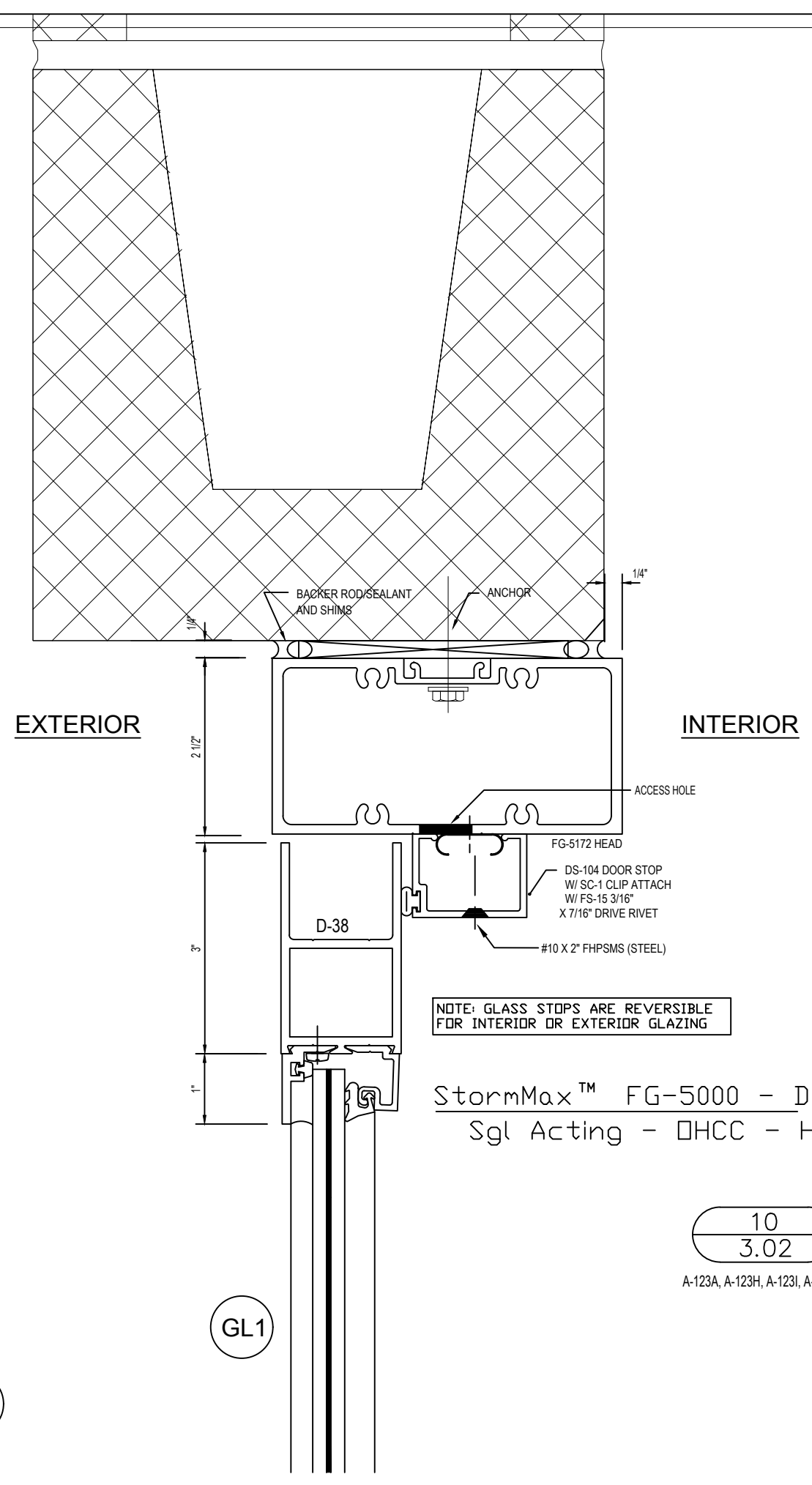
PROJECT: **FLOR BLUFF INDEPENDENT SCHOOL DISTRICT NATATORIUM**
CORPUS CHRISTI, TX
SUB CONTRACTOR/INSTALLER:
THURMAN-FONDREN GLASS CO., INC.
PHONE: (361) 854-2316

DRAWN BY:	DG	DATE:	05/13/16
CHECKED BY:	CW	DATE:	05/13/16
JOB NAME:	FLOR BLUFF NATATORIUM		
SHEET NO.:	3.01		



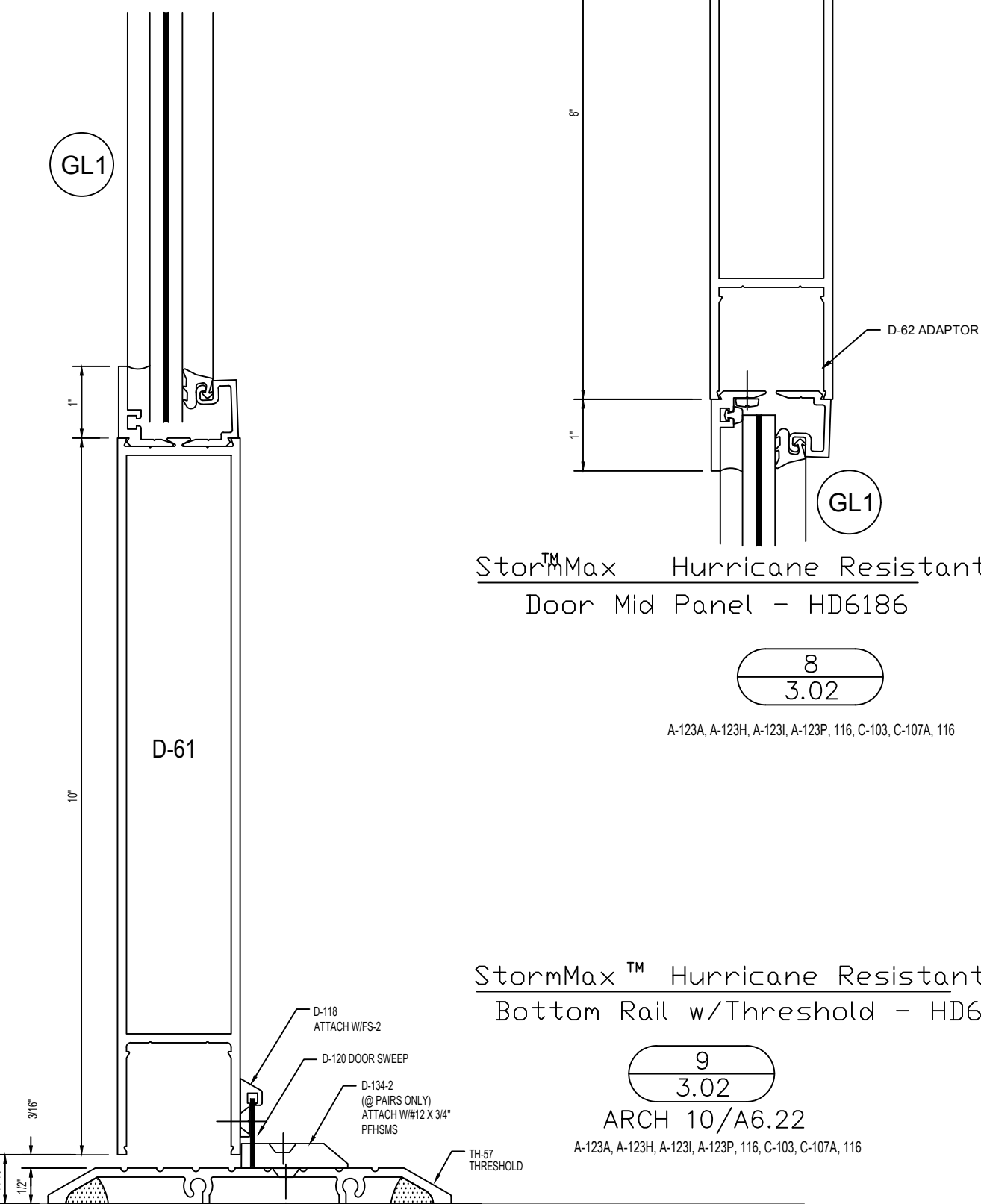
StormMax™ FG-5100 - Wet Glazed Door Head @ Transom -H7864

7
3.02
ARCH 9/A6.22
A-100A



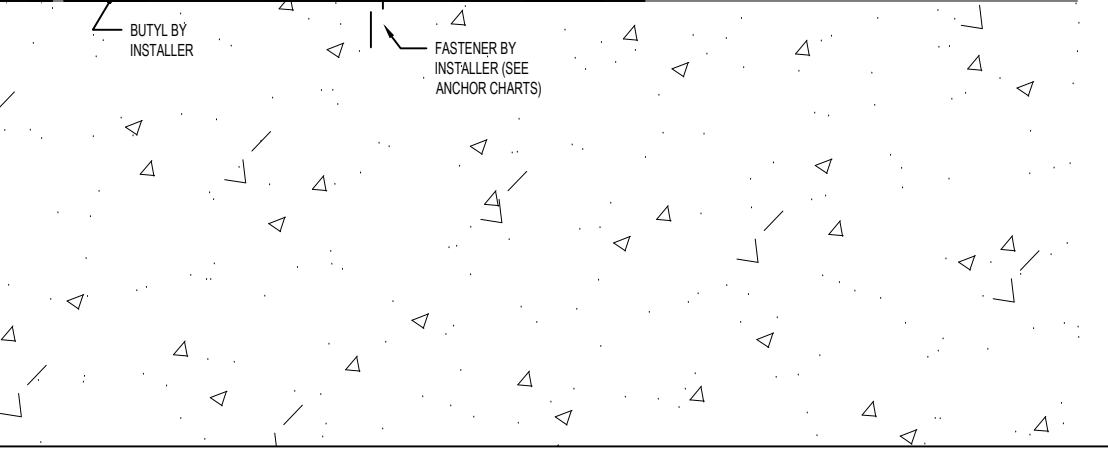
StormMax™ FG-5000 - Door Head Sgl Acting - DHCC - H6333

10
3.02
A-123A, A-123H, A-123I, A-123P



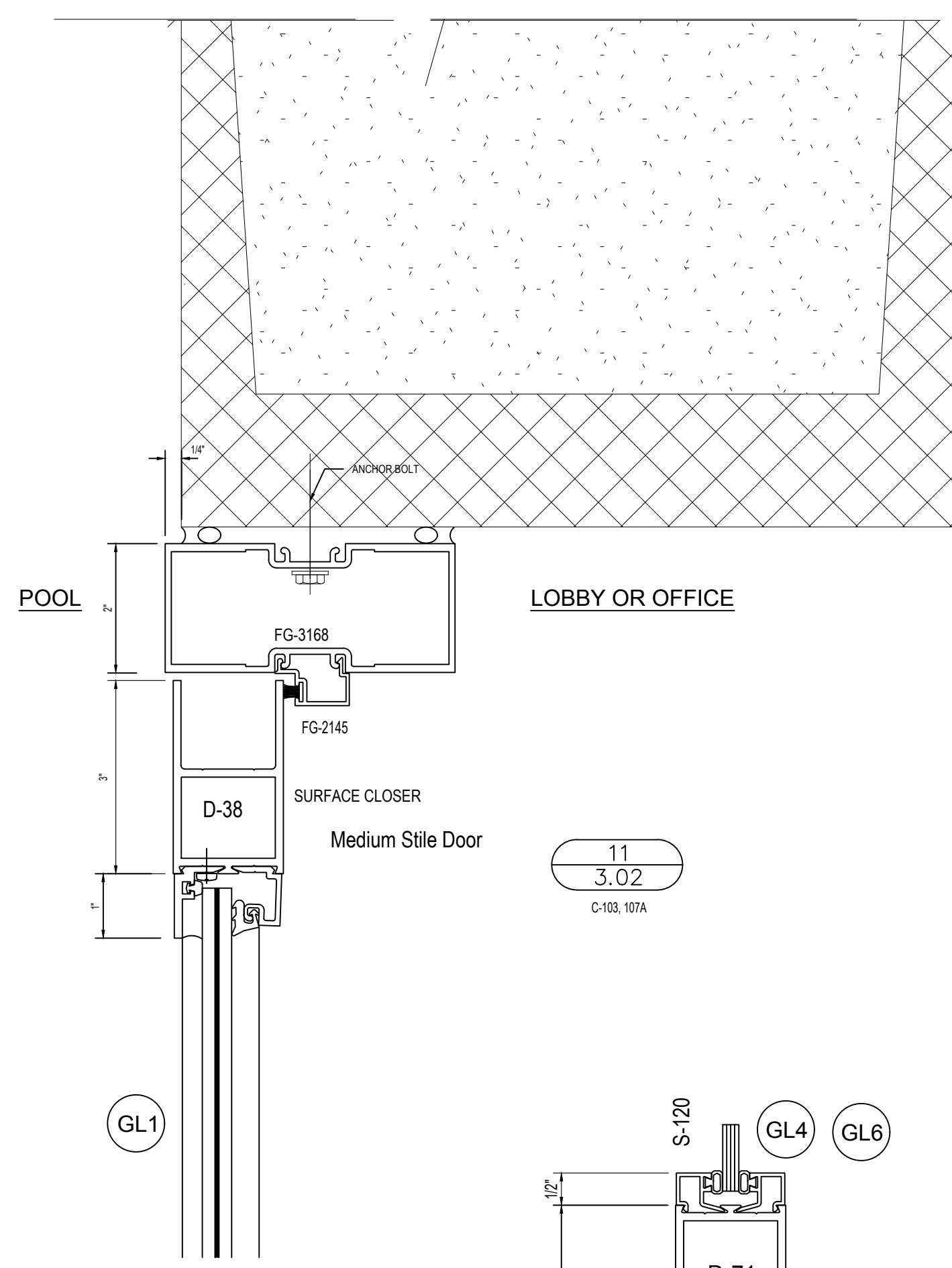
StormMax™ Hurricane Resistant Entrances Door Mid Panel - HD6186

8
3.02
A-123A, A-123H, A-123I, A-123P, 116, C-103, C-107A, 116



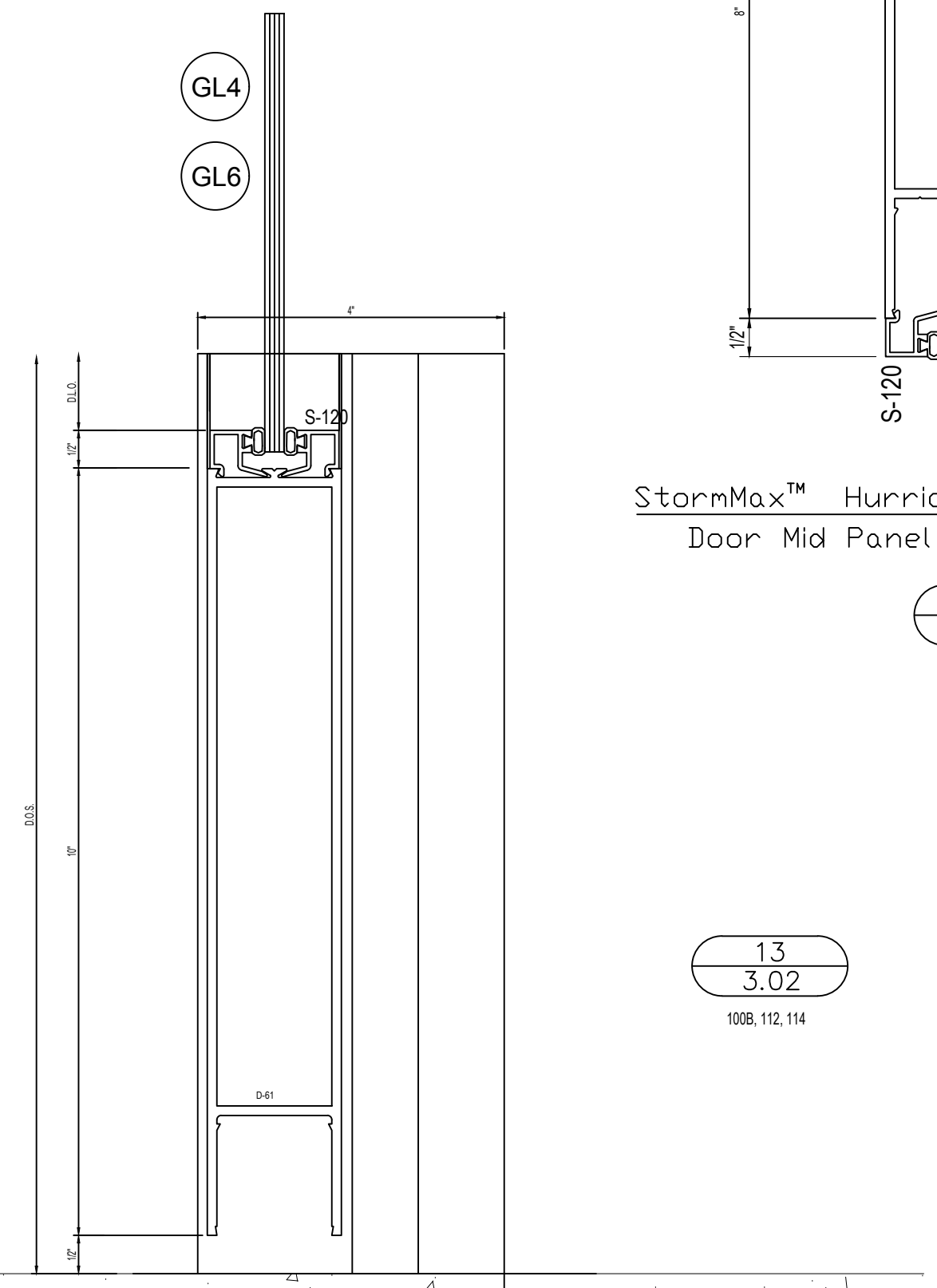
StormMax™ Hurricane Resistant Entrances Bottom Rail w/Threshold - HD6157

9
3.02
ARCH 10/A6.22
A-123A, A-123H, A-123I, A-123P, 116, C-103, C-107A, 116

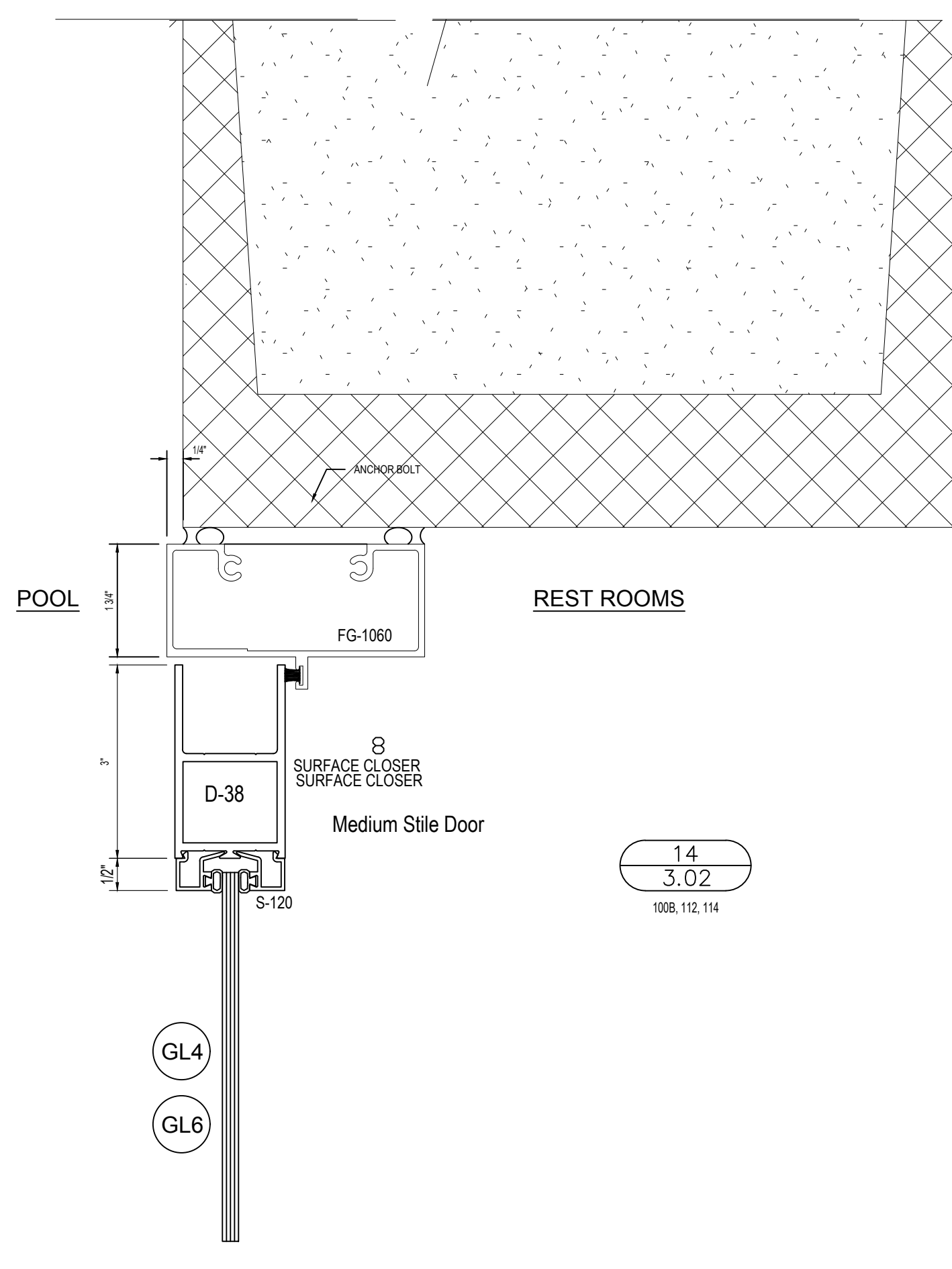


StormMax™ Hurricane Resistant Entrances Door Mid Panel - HD6186

12
3.02
100B, 112, 114



13
3.02
100B, 112, 114



Medium Stile Door

14
3.02
100B, 112, 114

IP	REVISE DRAWINGS PER ARCHITECT'S REQUEST	DATE
1P	Add Elevation, Fastener Pages, and Details	11/28/16
2P	REVISION OLDCASTLE/FASTENERS	11/28/16
3P	2ND. REVISION OLDCASTLE	11/11/16
4P	1ST. REVISION/TUBELITE	9/15/16
5P	1ST. SUBMISSION/TUBELITE	5/13/16
NO	DESCRIPTION	DATE

THURMAN FONDREN GLASS
6933 WEBER RD. CORPUS CHRISTI, TX 78413
361/854-2316 361/853-8325 FAX

PROJECT: FLOUR BLUFF INDEPENDENT SCHOOL DISTRICT NATATORIUM
CORPUS CHRISTI, TX
SUB CONTRACTOR/INSTALLER: THURMAN-FONDREN GLASS CO., INC.
PHONE: (361) 854-2316

DRAWN BY: DG	DATE: 05/13/16
CHECKED BY: CW	DATE: 05/13/16
JOB NAME: FLOUR BLUFF NATATORIUM	
SHEET NO.: 3.02	

DRAWING SUBMISSION